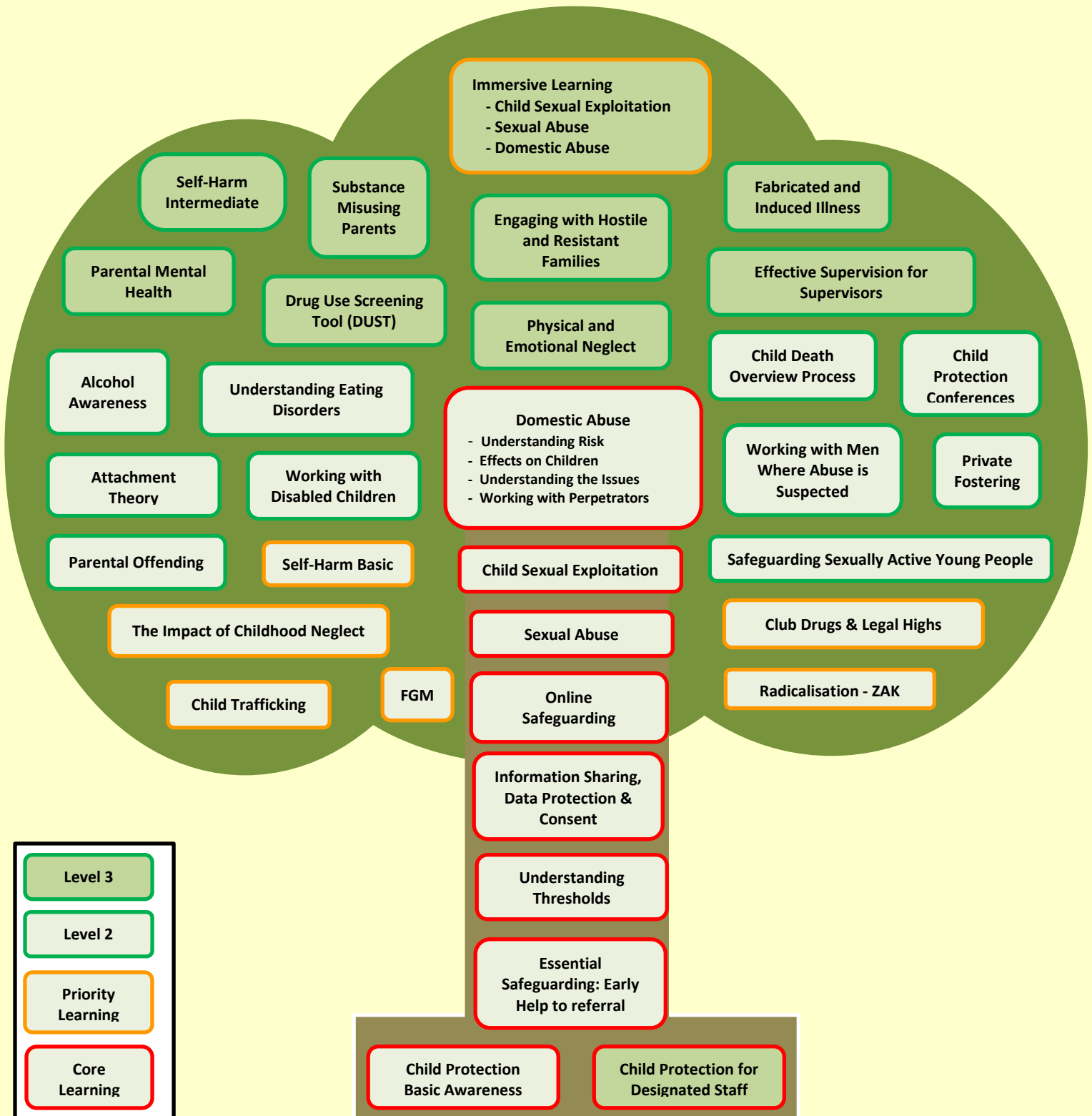


KSCB 'Safeguarding Training Tree' 2016

KSCB offers a range of free multi-agency training courses.

The 'Training Tree' has been designed to reflect the range of our training offered and to make it easy to understand which courses are core learning, which are priority areas and how the Level 2 and 3 courses follow on.

To find out more go to www.kscb.org.uk or to book a place directly go to: www.kentcpdonline.org.uk.



KSCB E-Learning Courses 2016 -18

- An Introduction to FGM, Forced Marriage, Spirit Possession and Honour Based Violence
- An Introduction to Integrated Working (The Early Help Assessment/ Lead Professional/ Information Sharing)
- An Introduction to Safeguarding Children
- Awareness of Child Abuse and Neglect (Core Version)
- Awareness of Child Abuse and Neglect (Foundation Version)
- Awareness of Child Abuse and Neglect (Police Version)
- Awareness of Child Abuse and Neglect (Young People Version)
- Awareness of Domestic Abuse and Violence including the Impact on Children, Young People and Adults at Risk
- Child Accident Prevention
- Child Development
- Collaborative Working: A Whole Family Approach
- Common Core of Skills and Knowledge
- Communication in Health, Social Care or Children's and Young People's Settings
- Dementia Awareness
- Dignity in Care
- Duty of Care in Health, Social Care or Children's and Young People's Settings
- Early Child Development
- Equality and Inclusion in Health, Social Care or Children's and Young People's Settings
- E-Safety: Guidance for Practitioners Working with Children
- Falls and Fractures Prevention in Older People
- Hate Crime
- Health and Safety in Health, Social Care or Children's and Young People's Settings
- Hidden Harm
- Information Sharing- Level 2
- Introducing Telecare and Telehealth
- Medication Awareness
- Mental Capacity Act
- Moving and Handling Objects and People
- Parental Mental Health
- Personal Development in Health, Social Care or Children's and Young People's Settings
- Person- Centred Approaches in adult Social Care Settings
- Radicalisation
- Risk Taking Behaviour
- Safe Sleeping for Babies: Reducing the Risk of SIDS
- Safeguarding Adults
- Safeguarding and Leadership
- Safeguarding Children from Abuse by Sexual Exploitation
- Safeguarding Children Refresher Training
- Safeguarding Children with Disabilities
- Safeguarding Everyone- Protecting Children, Young People, and Adults at Risk
- Safer Recruitment
- Safer Working Practices
- Self-Care
- Self-Harm and Suicidal Thoughts in Children and Young People
- Short Breaks for Disabled Children
- Strategic Managers Integrated Working
- Supervision and Appraisal in Early Years Settings
- Teenage Pregnancy
- The Assessment and Management of Urinary Incontinence and Bladder Dysfunction in Adults
- The Deprivation of Liberty Safeguards
- The Management of Urinary Catheterisation in Adults
- The Role of the Health and Social Care Worker
- Think Safe, Be Safe, Stay Safe
- Tissue Viability
- Trafficking, Exploitation and Modern Slavery
- Understanding Pathways to Extremism and the Prevent Programme
- Wellbeing in Sexual Health

